

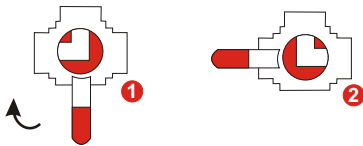
J-FLOW CONTROLS

3/4-WAY BALL VALVE

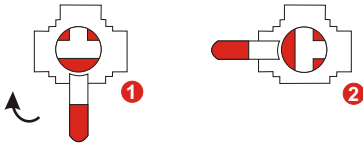
FLOW PATTERN

3-WAY

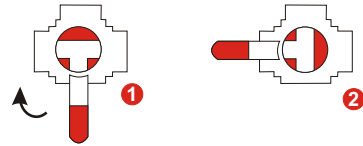
**L3-90°
STANDARD**



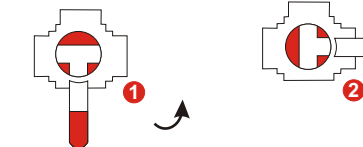
**T3-90°
STANDARD**



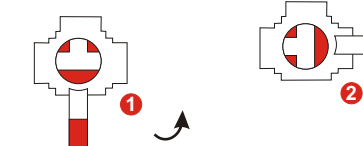
T4-90°



T5-90°

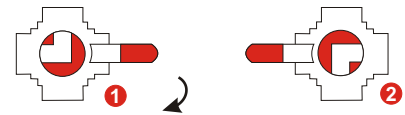


T6-90°

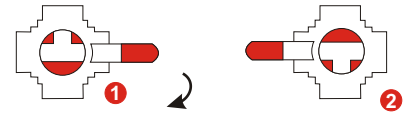


4-WAY

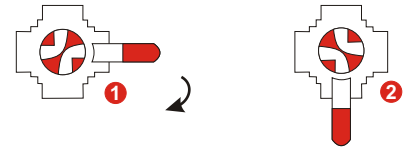
L5-180°



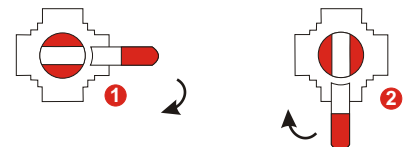
T5-180°



X-90°



I-90°



T-port 90° operation (T3/ T4/ T5/ T6) can be suitable for 4-way valve.